

Colour map for yarns

No. 010



No. 020



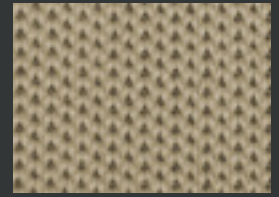
No. 040



No. 060



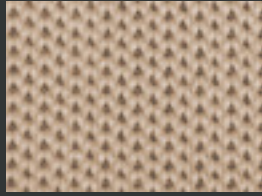
No. 070



No. 080



No. 090



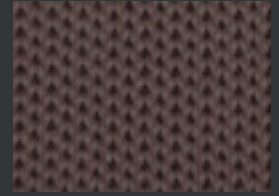
No. 170



No. 180



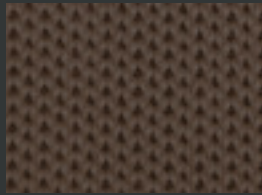
No. 250



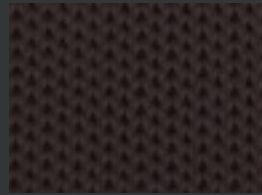
No. 260



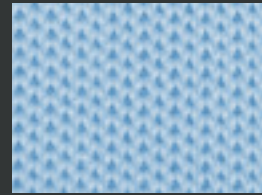
No. 270



No. 290



No. 310



No. 360



No. 430



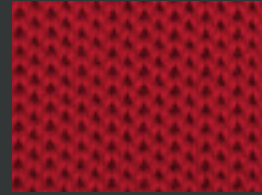
No. 440



No. 450



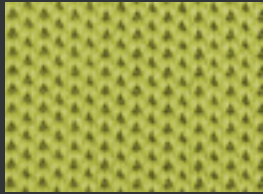
No. 460



No. 500



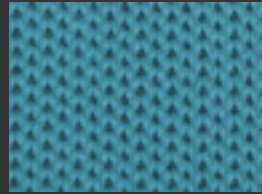
No. 510



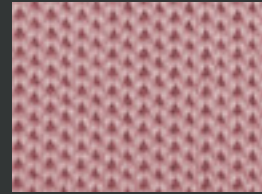
No. 620



No. 670



No. 730



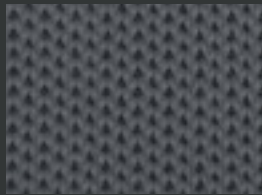
No. 780



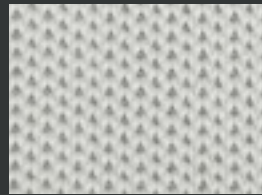
No. 850



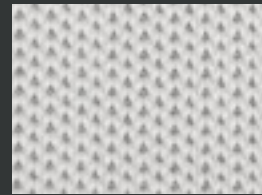
No. 860



No. 900



No. 910



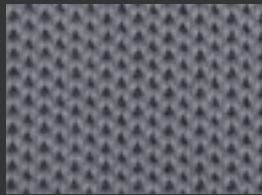
No. 920



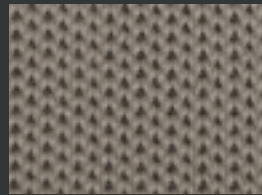
No. 940



No. 950



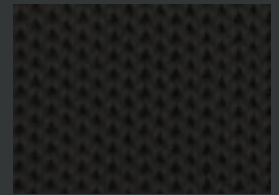
No. 960



No. 980



No. 990



We have an extended standard palette of most popular colourways. All yarns in this colour map are Polyester (PES) flame-retardant and are compliant to Flammability Standards such as CAL-117, DIN 4102 or EN 1021-1.

If your desired colour is not in our standard palette, we can offer to specially dye our yarns to your needs.

We just would need a reference colour code such as RAL or Pantone. Additionally, we are offering exciting melange colours. A Melange yarn is a twist of two or more colours.

In terms of material, we also knit a wide range of Natural and synthetic fibers such as Wool, Nylon (PA), Tencel and even conductive threads and metal wires.